



Guide Price  
**£225,000**  
 Leasehold

## Laylands Road, Brighton

- TWO DOUBLE BEDROOMS
- WEST FACING LOUNGE/DINER
- SEPARATE KITCHEN
- FIRST FLOOR FLAT
- 73 SQ. M
- UTILITY ROOM

\*\*\*GUIDE PRICE: £225,000 - £250,000\*\*\*

Situated on the first floor of a well-maintained purpose-built block, this spacious two-bedroom apartment is ideally located within walking distance of Portslade and Fishersgate mainline stations, local shops, parks, and the seafront.

The accommodation comprises a generous living area, separate fitted kitchen, two double bedrooms, a family bathroom, and a useful utility room, making it an ideal purchase for first-time buyers and investors.

**Robert  
 Luff & Co**  
 Sales | Lettings | Commercial

T: 01273 921133 E:  
[www.robertluff.co.uk](http://www.robertluff.co.uk)



## Accommodation

### Entrance Hall

Lounge/Diner 14'8 x 14'3 (4.47m x 4.34m)

Kitchen 10'4 x 7'9 (3.15m x 2.36m)

Bedroom One 15'3 x 10'5 (4.65m x 3.18m)

Bedroom Two 14'3 x 10'5 (4.34m x 3.18m)

### Bathroom

### Utility Room

### Agents Notes

Tenure: Leasehold Approx. 94 Years Remaining

Maintenance Fee: £1,015.00 Per Annum

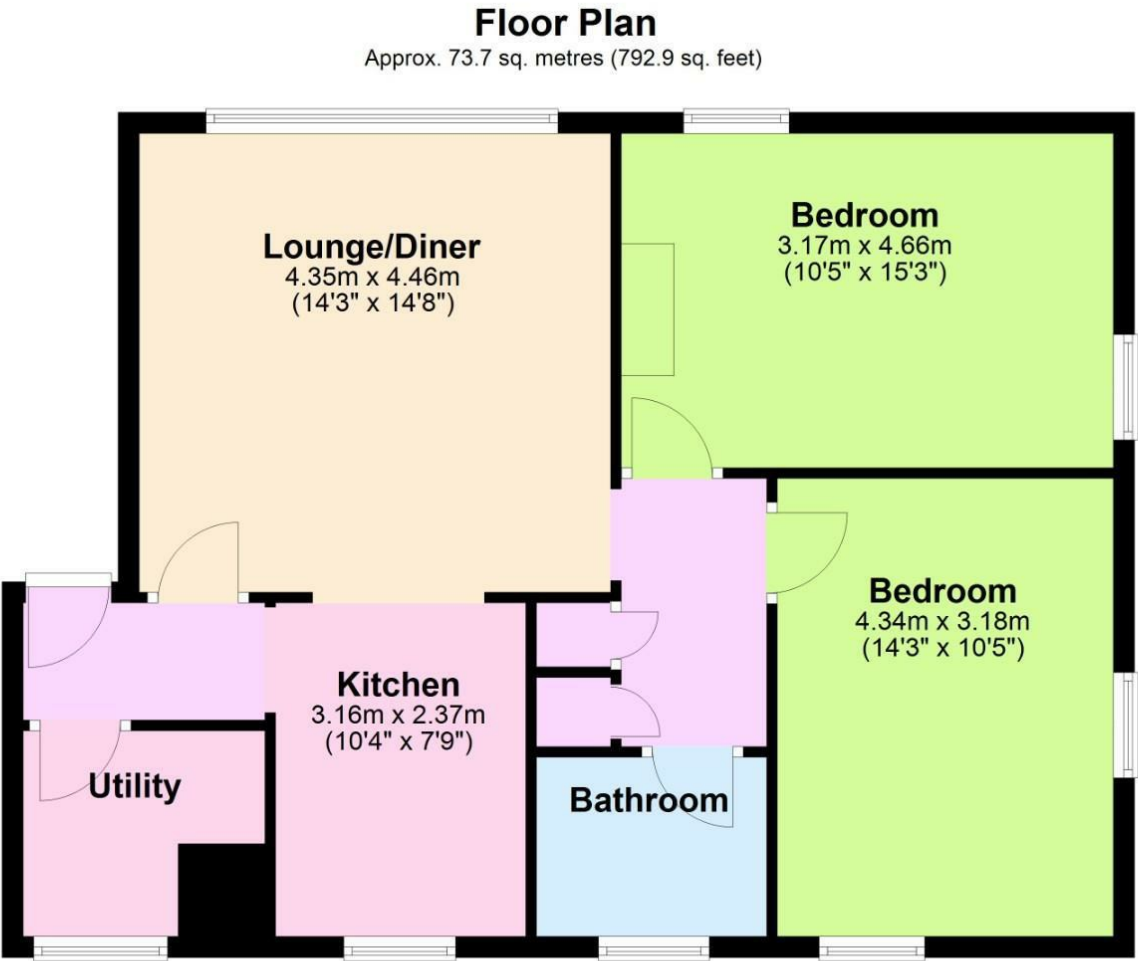
Ground Rent: £10 Per Annum

EPC Rating: C

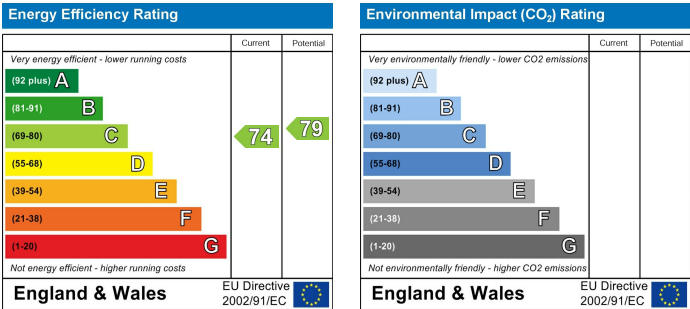
Council Tax Band: B







Total area: approx. 73.7 sq. metres (792.9 sq. feet)



The information provided about this property does not constitute or form any part of an offer or contract, nor may it be regarded as representations. All interested parties must verify accuracy and your solicitor must verify tenure/lease information, fixtures and fittings and, where the property has been extended/converted, planning/building regulation consents. All dimensions are approximate and quoted for guidance only as are floor plans which are not to scale and their accuracy cannot be confirmed. References to appliances and/or services does not imply that they are necessarily in working order or fit for the purpose.